

PELICAN TACKLE

Fishing Lines Catalogue



Content

Nylon Monofilament Line	1
FD Monofilament Line Series	
Specialty Lines	
Tapered Line	9
Tapered Shock Leader	
Surfcasting Tapered Lines	
Double Tapered Lines	
Tapered Leaders	
Fluorocarbon Lines	13
RX Regular Fluorocarbon	
SX Extra Supple Fluorocarbon	
SI Hard Fluorocarbon	
RXi Best Value Fluorocarbon	
Multi-filament lines	18
SLIC 8 & SLIC4	
MICRO 4 & FUSION	
Turn-Key Solutions	21
Commercial Fishing Lines	22
Long Line	
Snoods	
Cast Net	24
Chum Bags	25

Our Company



ETHICAL BUSINESS
AMFORI BSCI



JINAN PELICAN TRADE CO.,LTD is main fishing tackles wholesaler and main exporter in China. We do business on fishing tackles since 1998. We supply all kinds of fishing tackles, e.g.: Rods, Reels, All kinds of Lures(Plastic lures, Soft Lures, Wood Lures,) Fishing nets, Rod components, Hooks, Swivels, Spoons, Spinners, Landing Nets, Waders, Boots and other kinds of fishing equipments.

And are in a position to accept orders against customers' samples specifying design, specifications and requirements. We are also accept orders for goods with customers' own brand. As being a supplier, We have a good sales record.

Especially in international market, we export the products to many countries in American, Europe, Australia, Africa, Southeast Asia.

We promise: the best quality, the best service and the highest efficiency for our every customer.

We are at your disposal, worldwide.

FD Monofilament Line Series

Our technology and production experience coupled with the best nylon raw material allow us to supply a sophisticated range of nylon monofilament lines that is recognized for its quality, consistency and appropriateness to most fishing applications.

Our extensive knowledge on PA materials is the base to our range of single polymer, co-polymers and multi-polymers nylon monofilament lines that we proudly present.

FD Monofilament Line Series

FD4000 Multiplex

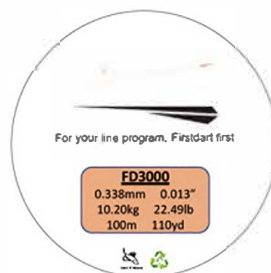


FD4000 Multiplex is a multi polymer nylon which combine PA6, PA66 and PA12 polymers in a single high tech product.

The unique blend of polymers gives the product better tensile strength than conventional copolymer lines allowing the sport fisherman to fish with stronger lines without having to increase the diameter and lose presentation. In addition the low diameter and high strength properties of the line give the angler greater sensitivity and feel.

These features make this line ideal for those requiring a specialised performance in extreme circumstances.

FD3000 Superior



FD3000 Superior is a premium copolymer line made from special blend of PA6 and PA12 polymers to give a very high breaking strain with minimum stretch.

It has excellent transparency, suppleness and abrasion resistance to make it the perfect choice for professional anglers.

The special copolymer blend has been developed and refined over the years to offer a consistent product with good knot strength, high impact strength and excellent handling. Suitable for both freshwater and saltwater applications where a very high level of consistency and performance are required FD3000 is one of our most versatile lines that is used worldwide in many different situations.

FD Monofilament Line Series

FD2000 Premium



FD2000 Premium is our super reliable copolymer line made from a blend of PA6 and PA66 polymers to give a high breaking strain with excellent knot strength. This product has been produced and refined by us for many years to offer superb consistency of product and performance.

The copolymer blend gives it a superb combination of suppleness, strength and reliability make it one of our most versatile lines. Coupled with its superb value offering for a copolymer product this line has become a clear favourite with many of our customers.

This line is perfect for applications, both freshwater and saltwater, where a very high level of consistency and reliability are required. FD2000 Premium is our best selling mono line in the value for money sector.

FD1000 Classic



FD1000 Classic is our entry level monofilament line. We use a high integrity PA6 nylon polymer to produce our FD1000 Classic. This polymer is specially selected to ensure good transparency in clear and tint colours and excellent dye performance in coloured lines. The FD1000 Classic product has been used and abused in many different markets over the years and has always shown itself to be an incredibly reliable product coupled to a performance of lines costing much more.

This line is equally at home in freshwater or saltwater and is the first choice when price and reliability are the main issues. Although it is possible to make cheaper lines it is not possible to make them this reliable!

FD Monofilament Line Series

Line No.	Dia. MM	FD1000 Classic			FD2000 Premium			FD3000 Superior			FD4000 Multiplex		
		Tensile Strength	Knot Strength	Stretch	Tensile Strength	Knot Strength	Stretch	Tensile Strength	Knot Strength	Stretch	Tensile Strength	Knot Strength	Stretch
		KG	KG	%	KG	KG	%	KG	KG	%	KG	KG	%
0.1	0.052	-	-	-	-	-	-	0.26	0.20	20-24	0.28	0.24	20-22
0.2	0.074	-	-	-	-	-	-	0.47	0.36	"	0.51	0.43	"
0.3	0.091	-	-	-	0.63	0.45	22-26	0.69	0.53	"	0.73	0.64	"
0.4	0.105	0.77	0.52	-	0.85	0.58	"	0.92	0.72	"	1.02	0.83	"
0.5	0.117	0.95	0.63	-	1.04	0.71	"	1.15	0.96	"	1.25	1.04	"
0.6	0.128	1.06	0.69	-	1.21	0.82	"	1.38	1.11	"	1.45	1.20	"
0.7	0.138	1.23	0.79	-	1.42	0.95	"	1.58	1.28	"	1.70	1.39	"
0.8	0.148	1.39	0.88	-	1.60	1.07	24-28	1.82	1.41	22-26	1.94	1.54	21-25
0.9	0.157	1.52	0.95	-	1.76	1.17	"	2.03	1.54	"	2.18	1.70	"
1.0	0.165	1.66	1.05	-	1.92	1.28	"	2.22	1.69	"	2.42	1.89	"
1.2	0.181	1.96	1.23	-	2.26	1.46	"	2.61	1.93	"	2.90	2.19	"
1.5	0.202	2.32	1.46	25-32	2.68	1.74	"	3.10	2.30	"	3.54	2.62	"
2.0	0.234	3.06	1.83	"	3.52	2.23	"	4.05	2.91	"	4.66	3.35	"
2.5	0.261	3.79	2.25	"	4.36	2.76	"	5.01	3.60	"	5.76	4.14	"
3.0	0.286	4.45	2.64	"	5.11	3.24	"	5.87	4.23	"	6.76	4.86	"
3.5	0.309	5.11	3.03	"	5.90	3.72	"	6.75	4.86	"	7.76	5.59	"
4.0	0.330	5.80	3.35	"	6.71	4.10	"	7.62	5.33	"	8.76	6.13	"
4.5	0.351	6.45	3.73	"	7.46	4.56	"	8.47	5.93	"	9.75	6.82	"
5.0	0.369	7.08	4.09	"	8.18	5.01	"	9.30	6.51	"	10.69	7.48	"
5.5	0.388	7.76	4.49	"	8.98	5.49	"	10.20	7.14	"	11.54	8.21	"
6.0	0.405	8.42	4.65	26-36	9.73	5.69	24-30	11.06	7.52	24-28	12.43	8.65	22-26
7.0	0.437	9.92	5.48	"	11.40	6.67	"	12.81	8.71	"	14.50	10.02	"
8.0	0.467	11.20	6.19	"	12.88	7.53	"	14.47	9.84	"	16.57	11.31	"
9.0	0.496	12.53	6.92	"	14.40	8.42	"	16.18	11.00	"	18.60	12.65	"
10	0.523	13.71	7.34	"	15.76	8.94	"	17.71	11.51	"	20.37	13.24	"
11	0.548	14.62	7.83	"	16.81	9.72	"	18.88	11.95	"	21.71	13.75	"
12	0.572	15.33	8.21	"	17.63	10.62	"	19.80	12.87	"	22.77	14.80	"
14	0.618	17.12	8.73	"	19.68	11.79	"	21.87	14.21	"	25.15	16.35	"
16	0.661	19.33	9.86	28-40	21.65	13.45	28-35	24.05	15.15	28-35	27.66	17.43	26-32
18	0.701	21.13	10.78	"	23.67	14.70	"	26.30	16.57	"	30.24	19.05	"
20	0.739	23.28	11.87	"	26.08	16.20	"	28.97	18.25	"	33.50	20.99	"
25	0.826	28.33	14.45	"	31.73	19.71	"	35.25	22.21	"	40.54	25.54	"
30	0.905	31.90	15.18	"	35.73	21.45	"	39.70	23.82	"	45.65	27.39	"
35	0.978	36.76	17.49	"	40.43	24.27	"	44.92	26.95	"	51.66	31.00	"
40	1.045	41.57	19.79	"	45.73	27.45	"	50.81	30.48	"	58.43	35.06	"
50	1.168	51.04	23.86	30-42	56.14	32.54	30-40	62.38	36.18	"	71.74	41.61	"
60	1.280	60.36	28.22	"	66.40	38.48	"	73.78	42.79	"	84.84	49.21	"
70	1.382	69.56	32.52	"	76.51	44.36	"	85.01	49.31	"	97.76	56.70	"
80	1.478	78.76	36.82	"	86.63	50.21	"	96.26	55.83	"	110.70	64.21	"
90	1.568	87.65	38.74	"	96.42	53.88	"	107.13	59.99	"	123.20	68.99	"
100	1.652	96.58	42.69	32-44	106.23	59.38	35-45	118.04	66.10	35-45	135.74	76.02	32-40
120	1.810	114.21	50.48	"	125.63	70.22	"	139.59	78.17	"	160.52	89.89	"
150	2.024	135.00	63.12	-	153.63	86.22	"	171.39	95.98	"	197.10	110.38	"
180	2.217	158.00	75.66	-	179.80	101.97	"	202.70	113.51	"	233.10	130.54	"
200	2.337	174.00	82.00	-	198.01	112.32	"	223.34	125.07	"	256.84	143.83	"
250	2.613	203.00	97.00	-	231.01	117.02	"	277.82	144.46	"	319.49	166.13	"
300	2.862	231.00	106.00	-	262.88	136.59	"	324.30	168.64	"	372.94	193.93	"
350	3.091	254.00	114.00	-	289.05	154.69	"	365.23	189.92	"	420.01	218.41	"
400	3.305	273.00	120.00	-	310.67	171.74	"	405.48	210.85	"	466.30	242.47	"
500	3.695	319.00	134.00	-	363.02	208.36	"	491.94	255.81	"	565.73	294.18	"
600	4.047	356.00	142.00	-	405.13	234.87	35-45	554.55	277.27	35-45	637.73	318.87	32-40



For your line program

FD Monofilament Line Series

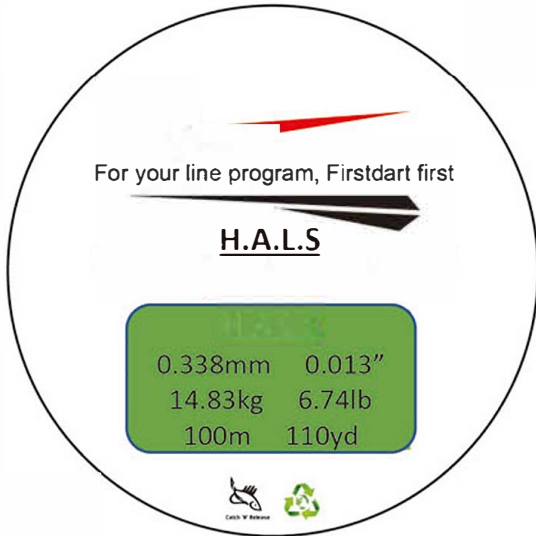
Line No.	Dia. MM	FD1000 Classic			FD2000 Premium			FD3000 Superior			FD4000 Multiplex		
		Tensile Strength	Knot Strength	Stretch	Tensile Strength	Knot Strength	Stretch	Tensile Strength	Knot Strength	Stretch	Tensile Strength	Knot Strength	Stretch
		LB	LB	%	LB	LB	%	LB	LB	%	LB	LB	%
0.1	0.052	-	-	-	-	-	-	0.57	0.44	20-24	0.62	0.53	20-22
0.2	0.074	-	-	-	-	-	-	1.03	0.79	"	1.12	0.95	"
0.3	0.091	-	-	-	1.39	0.99	22-26	1.52	1.17	"	1.62	1.41	"
0.4	0.105	1.69	1.14	-	1.87	1.28	"	2.02	1.58	"	2.24	1.83	"
0.5	0.117	2.09	1.39	-	2.29	1.57	"	2.53	2.12	"	2.75	2.29	"
0.6	0.128	2.33	1.52	-	2.66	1.81	"	3.04	2.44	"	3.20	2.64	"
0.7	0.138	2.71	1.74	-	3.12	2.09	"	3.48	2.81	"	3.73	3.07	"
0.8	0.148	3.06	1.94	-	3.53	2.35	24-28	4.00	3.10	22-26	4.27	3.38	21-25
0.9	0.157	3.34	2.09	-	3.86	2.57	"	4.47	3.40	"	4.79	3.73	"
1.0	0.165	3.65	2.31	-	4.23	2.82	"	4.89	3.72	"	5.32	4.16	"
1.2	0.181	4.31	2.71	-	4.97	3.22	"	5.75	4.25	"	6.38	4.81	"
1.5	0.202	5.10	3.21	25-32	5.90	3.83	"	6.82	5.05	"	7.78	5.76	"
2.0	0.234	6.74	4.03	"	7.74	4.91	"	8.91	6.41	"	10.24	7.37	"
2.5	0.261	8.33	4.95	"	9.59	6.07	"	11.01	7.93	"	12.66	9.12	"
3.0	0.286	9.78	5.81	"	11.24	7.12	"	12.92	9.30	"	14.86	10.70	"
3.5	0.309	11.23	6.67	"	12.98	8.18	"	14.84	10.68	"	17.07	12.29	"
4.0	0.330	12.76	7.37	"	14.75	9.03	"	16.77	11.74	"	19.28	13.50	"
4.5	0.351	14.19	8.21	"	16.41	10.04	"	18.64	13.05	"	21.44	15.01	"
5.0	0.369	15.57	9.00	"	18.00	11.01	"	20.45	14.31	"	23.52	16.46	"
5.5	0.388	17.08	9.88	"	19.75	12.09	"	22.44	15.71	"	25.38	18.06	"
6.0	0.405	18.52	10.23	26-36	21.42	12.53	24-30	24.34	16.55	24-28	27.34	19.03	22-26
7.0	0.437	21.83	12.06	"	25.09	14.68	"	28.19	19.17	"	31.90	22.04	"
8.0	0.467	24.64	13.62	"	28.33	16.57	"	31.83	21.64	"	36.46	24.89	"
9.0	0.496	27.56	15.22	"	31.67	18.53	"	35.59	24.20	"	40.93	27.83	"
10	0.523	30.17	16.15	"	34.68	19.66	"	38.96	25.33	"	44.81	29.12	"
11	0.548	32.15	17.23	"	36.98	21.38	"	41.53	26.30	"	47.76	30.25	"
12	0.572	33.73	18.06	"	38.79	23.36	"	43.56	28.31	"	50.09	32.56	"
14	0.618	37.67	19.21	"	43.30	25.94	"	48.11	31.27	"	55.33	35.96	"
16	0.661	42.52	21.69	28-40	47.62	29.58	28-35	52.91	33.34	28-35	60.85	38.34	26-32
18	0.701	46.49	23.72	"	52.07	32.33	"	57.86	36.45	"	66.53	41.92	"
20	0.739	51.22	26.11	"	57.37	35.64	"	63.74	40.16	"	73.70	46.18	"
25	0.826	62.32	31.79	"	69.80	43.36	"	77.55	48.86	"	89.18	56.19	"
30	0.905	70.18	33.40	"	78.60	47.18	"	87.34	52.40	"	100.44	60.26	"
35	0.978	80.86	38.48	"	88.95	53.40	"	98.83	59.30	"	113.66	68.20	"
40	1.045	91.45	43.54	"	100.60	60.39	"	111.77	67.06	"	128.54	77.12	"
50	1.168	112.28	52.49	30-42	123.51	71.60	30-40	137.24	79.60	"	157.82	91.54	"
60	1.280	132.80	62.08	"	146.08	84.66	"	162.31	94.14	"	186.66	108.26	"
70	1.382	153.02	71.54	"	168.32	97.59	"	187.03	108.47	"	215.08	124.75	"
80	1.478	173.27	81.00	"	190.59	110.46	"	211.77	122.83	"	243.54	141.25	"
90	1.568	192.83	85.23	"	212.11	118.54	"	235.68	131.98	"	271.04	151.78	"
100	1.652	212.47	93.92	32-44	233.72	130.64	35-45	259.68	145.42	35-45	298.64	167.24	32-40
120	1.810	251.25	111.06	"	276.38	154.48	"	307.09	171.97	"	353.15	197.76	"
150	2.024	297.00	138.86	-	337.99	189.68	"	377.06	211.16	"	433.62	242.83	"
180	2.217	347.60	166.45	-	395.57	224.33	"	445.93	249.72	"	512.82	287.18	"
200	2.337	382.80	180.40	-	435.63	247.10	"	491.34	275.15	"	565.04	316.42	"
250	2.613	446.60	213.40	-	508.23	257.44	"	611.20	317.82	"	702.87	365.49	"
300	2.862	508.20	233.20	-	578.33	300.51	"	713.46	371.00	"	820.48	426.65	"
350	3.091	558.80	250.80	-	635.91	340.31	"	803.50	417.82	"	924.02	480.49	"
400	3.305	600.60	264.00	-	683.48	377.82	"	892.05	463.86	"	1025.85	533.44	"
500	3.695	701.80	294.80	-	798.65	458.38	"	1082.26	562.78	"	1244.60	647.19	"
600	4.047	783.20	312.40	-	891.28	516.72	35-45	1220.01	610.00	35-45	1403.01	701.50	32-40

Based on our award winning FD series of monofilaments we can produce speciality monofilaments with different qualities and performance criteria. By using additional additives in the extrusion process, additional treatments in the cooling baths, and varying the heating-stretching-cooling process we can develop specific lines for specific purposes. Add to this our ability to dye lines multiple colours and you begin to see the possibilities.

Specialty Lines

SUPERLINE

HALS Superline



Low Stretch mono-filament enhances sensitivity so the faintest vibration is amplified and ensures positive hook-sets. Low memory manages well so it is well suited to be used as a main-line. Combined with high abrasion resistance properties makes it a market leading line system.

Pros: High Abrasion resistance;

Low stretch makes the line more sensitive;

Low memory and easily manageable so it casts well;

Proprietary additives added to ensure exceptional knot efficiency.

Specialty Lines



FLUOROSILK – Ultrasoft Line with Special Fluorocarbon Coating

Another property of fluoropolymers like PVDF is that they share the properties of fluorocarbons and this gives them non-stick and friction reducing properties. In fact PTFE was the first fluoropolymer, discovered in 1938, more commonly known as Teflon by DuPont and is widely recognised for its non-stick properties.

By coating normal nylon with a fluorocarbon outer we are able to harness the friction reducing properties of the fluoropolymer whilst retaining the integrity and overall performance of the nylon core. This produces a line with a lower surface friction than normal nylon allowing for longer, smoother casts.

If your application calls for a line with exceptionally smooth handling, low memory and long casting then consider Fluorosilk.

No.	Diam (mm)	Tensile Strength (KG)	Knot Strength (KG)	Elongation (%)
0.22	0.080	0.60	0.46	20-30
0.35	0.100	0.90	0.69	20-30
0.6	0.126	1.40	1.08	20-30
0.8	0.148	1.90	1.46	20-30
1	0.165	2.30	1.77	20-30
1.2	0.185	2.90	2.23	20-30
1.5	0.204	3.60	2.77	20-30
1.7	0.223	4.30	3.31	20-30
2	0.243	5.00	3.85	20-30
2.5	0.260	5.80	4.46	20-30
3	0.281	6.70	5.15	20-30
3.5	0.310	7.80	6.00	20-30
4	0.330	8.70	6.69	20-30
5	0.370	10.70	8.23	20-30
6	0.398	12.40	9.54	20-30



For your line program, Firstdart first

TAPERED LINES



Our tapered lines are designed for a natural presentation, a smooth casting and seamless connection without compromising strength.

Be it a fly tapered leader or a shock leader; our profile design will help mitigate some of the problems associated with having knots. Our tapered lines are available in standard profile and sizes as well as custom made designs to satisfy your requirements.

TAPERED LINES



Tapered Shock Leader

Similar to the above but not having the running line built in. These allow the leader to be attached to the main line with a much smaller knot than would be normal with a traditional leader. The smaller knot travels smoother through the guides and catches less weed.



TIP Diam (mm)	BUTT Diam (mm)	Tensile Strength (KG)
0.16	0.45	1.76
0.18	0.57	2.26
0.20	0.57	2.68
0.23	0.57	3.54
0.26	0.57	4.38
0.28	0.57	5.10
0.30	0.57	5.70
0.33	0.57	6.70
0.35	0.57	7.40
0.37	0.63	8.10
0.40	0.63	9.50
0.45	0.70	11.00

*+-5% allowance on diameter (mm)

TAPERED LINES



Surf Casting Tapered Lines

Typically with an overall length of 200m or more these lines have a graduated taper from the running line diameter up to a 10-15m level portion of significantly thicker diameter at one end to cope with the stresses of long casts.



TIP Diam (mm)	BUTT Diam (mm)	Tensile Strength (KG)
0.20	0.45	2.50
0.23	0.45	3.40
0.26	0.50	4.20
0.28	0.50	4.90
0.30	0.55	5.70
0.35	0.55	6.70
0.40	0.60	9.70
0.45	0.60	12.80
0.50	0.68	14.40
0.55	0.75	16.80
0.60	0.75	19.60

TAPERED LINES



Double Tapered Lines

Especially developed for the European Carp market we now offer lines with shock leader built in at each end. This allows the angler to reverse the line when one leader is used up offering great value for money. The Double Shock Carp line features a 30lb shock/rubbing leader at each end and 12lb knot strength main line for distance casting along with our unique abrasion resistance formula.



Tapered Leaders

Used to create tapered hook lengths and tapered tippets to prevent tangling and improve bait presentation.

The leader can be cut where required to provide a hook leader that tapers down to the hook for the necessary finesse but retains a stiffer, tangle free section nearer the end tackle. Available in lengths and diameters to suit your application and market.

In addition to the length and variation of tapers we are also able to colour code lines by dyeing them different colours along their length. Please inform us of your requirements.



Fluorocarbon Lines

Unlike our other monofilaments this one is extruded from Polyvinylidene Fluoride.

PVDF is a highly non-reactive and pure thermoplastic fluoropolymer. Its higher density than nylon causes it to sink faster and its refractive index is much closer to water than nylon giving it almost invisible properties in water. Additionally PVDF lines do not absorb water in the way that nylon lines do during prolonged submersion.

For applications where a clear, almost invisible line are required, or where a more dense, faster sinking are required then PVDF lines are one to consider especially for leaders in both saltwater and freshwater.

Available, like all our lines, in a range of diameters and different packaging options a PVDF line in your range can offer an additional dimension to your offering.

We offer Fluorocarbon lines in 3 varieties with different properties to suit differing applications and conditions as follows.

Fluorocarbon Lines

RX Fluorocarbon - Regular

This is our regular, and best selling, Fluorocarbon and offers an all round combination of knot strength, elongation, clarity and tensile strength to suit most fishing applications. It offers great value for money whilst still being 100% PVDF monofilament.



No.	Diam (mm)	Tensile Strength (KG)	Knot Strength (KG)	Elongation (%)
0.5	0.115	1.10	0.79	19-29
0.6	0.135	1.30	0.93	19-29
0.8	0.156	1.70	1.21	19-29
1	0.172	2.30	1.64	19-29
1.2	0.193	2.80	2.00	19-29
1.5	0.211	3.40	2.43	19-29
1.7	0.226	3.80	2.71	19-29
2	0.249	4.60	3.29	19-29
2.5	0.275	5.40	3.86	19-29
3	0.291	6.00	4.29	19-29
3.5	0.318	6.90	4.93	19-29
4	0.343	7.80	5.57	19-29
6	0.409	10.80	7.71	19-29
7	0.445	12.20	8.71	19-29
8	0.495	14.20	10.14	19-29
10	0.545	15.90	11.36	19-29
12	0.595	20.50	14.64	19-29
16	0.675	25.40	18.14	19-29
18	0.719	30.00	21.43	19-29
22	0.795	33.00	23.57	19-29
26	0.864	40.00	27.59	19-29
35	1.003	49.00	33.79	19-29
40	1.071	61.60	42.48	19-29
45	1.137	70.00	48.28	19-29
50	1.198	77.00	53.10	19-29
70	1.330	81.00	55.86	19-29
90	1.540	111.00	76.55	19-29
120	1.720	142.00	97.93	19-29
150	1.990	170.00	117.24	19-29
210	2.330	200.00	137.93	19-29

Fluorocarbon Lines



SX Fluorocarbon – Extra Supple

This product offers additional suppleness and soft handle making it great for tippet and fine leader applications where delicate presentation is the key. It features great clarity as you would expect from fluorocarbon lines and is easy to knot whilst retaining great knot strength. Its combination of suppleness, clarity and strength make it especially suitable for game and fly fishing applications.

No.	Diam (mm)	Tensile Strength (KG)	Knot Strength (KG)	Elongation (%)
0.5	0.112	1.20	0.96	24-34
0.6	0.134	1.64	1.31	15-25
0.8	0.154	2.10	1.68	14-24
1	0.176	2.60	2.08	14-24
1.2	0.198	3.10	2.48	13-23
1.5	0.219	3.80	3.04	14-24
1.7	0.232	4.30	3.44	16-26
2	0.258	5.30	4.24	15-25
2.5	0.280	6.00	4.80	15-25
3	0.300	6.90	5.52	15-25
4	0.344	8.70	6.96	15-25
6	0.410	12.00	9.60	15-25

Fluorocarbon Lines



SI Fluorocarbon - Hard

This fluorocarbon has been selected for its hard outer surface and stiffness. These properties make it superb for saltwater leaders and also stiff rigs for carp anglers. The additional abrasion resistance offered by this product sets it apart from other fluorocarbons where durability is required.

No.	Diam (mm)	Tensile Strength (KG)	Knot Strength (KG)	Elongation (%)
0.6	0.128	1.38	1.06	18-28
0.8	0.148	1.92	1.48	18-28
1	0.165	2.13	1.64	18-28
1.2	0.185	2.67	2.05	18-28
1.5	0.205	3.46	2.66	18-28
1.7	0.221	3.96	3.05	18-28
2	0.239	4.49	3.45	18-28
2.5	0.266	5.25	4.04	18-28
3	0.288	6.07	4.50	18-28
4	0.333	8.78	6.50	18-28
5	0.374	10.41	7.71	18-28
6	0.409	11.73	8.69	18-28
7	0.435	12.60	9.33	18-28
8	0.470	14.48	10.73	18-28
9	0.520	16.37	12.13	18-28

Fluorocarbon Lines



RXi Fluorocarbon Best Value Fluorocarbon



Award winning Firstdart RXi is our new Fluorocarbon line in Economy range with one of the best price / performance ratio in the market today. It provides good strength with a balanced stretch and very good abrasion resistance. Its usage is not restricted only to Pike leaders which is doing more than well but the possibilities are almost unlimited.

Available in diameters from 0,10mm to 1.20m, extruded in classic clear and in different colours on request.

Line No. (#)	Dia. (mm)	"Tensile Strength" (kg)	"Knot Strength" (kg)	Stretch %
1.5	0.210	2.97	1.69	15-25
1.75	0.225	3.48	1.95	15-25
2.0	0.238	3.93	2.23	15-25
2.5	0.261	4.75	2.72	15-25
3.0	0.293	5.87	3.23	15-25
3.5	0.313	6.69	3.62	15-25
4.0	0.338	7.41	4.07	15-25
5.0	0.378	8.97	5.03	15-25
6.0	0.414	9.70	5.45	15-25
7.0	0.447	11.29	6.25	15-25
8.0	0.478	13.41	7.05	15-25
10.0	0.535	15.74	8.25	15-25
12.0	0.586	18.57	9.64	15-25
14.0	0.630	20.47	10.94	15-25
16.0	0.660	22.92	12.22	15-25
18.0	0.710	25.35	13.12	15-25
20.0	0.755	27.32	14.85	15-25
22.0	0.780	30.55	15.81	15-25
24.0	0.810	32.62	16.69	15-25
26.0	0.840	35.48	17.75	15-25
28.0	0.870	37.13	18.85	15-25
30.0	0.910	39.88	19.92	15-25

Multi-filament Lines



Our range of braided main lines has been adopted in various countries all over the world. These lines are aimed at the discerning angler who wants a super sensitive, almost zero stretch line, that will give him superb handling and casting abilities, great hook sets and transmission and an enhanced fishing performance and experience.

Selecting a range of lines with slightly different properties, in a range of popular colours and diameters we believe we have a superb range of products to offer. All of these lines can be spooled to the appropriate length to suit your market and labelled as part of your OEM program.

Multi-filament Lines

SLIC 8

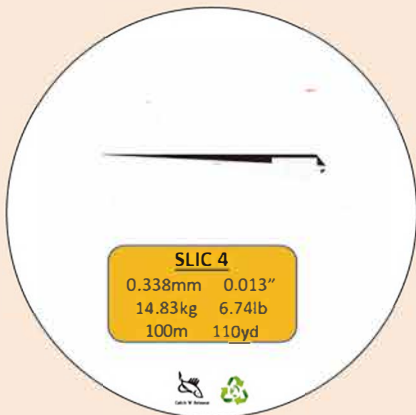
Made from high strength UHMWPE fibres using a special proprietary coating. This super smooth 8 carrier braid casts like a dream. knots well and is incredibly sensitive making it a pleasure to use. Superb abrasion and wear resistance, waterproof and virtually zero stretch you expect from braids.

No.	Tensile Strength (KG)	Tensile Strength (lb)	No.	Tensile Strength (KG)	Tensile Strength (lb)
0.4	3.6	8	3.5	18.2	40
0.6	5.0	11	4.0	19.5	443
0.8	5.9	13	5.0	22.7	50
1.0	7.3	16	6.0	24.5	54
1.2	9.1	20	7.0	27.3	60
1.5	10.5	23	8.0	31.8	70
2.0	15.5	34	10.0	40.9	90
3.0	16.4	36	12.0	50.0	110



SLIC 4

Made from the same high strength UHMWPE fibres as the SLC 8. This superb 4 carrier braid has all the attributes of a good braided line at a fraction of the cost.



No.	Tensile Strength (KG)	Tensile Strength (lb)	No.	Tensile Strength (KG)	Tensile Strength (lb)
0.1	2.4	5	2.5	15.5	34
0.2	3.0	7	3.0	16.4	36
0.4	4.0	9	3.5	17.3	38
0.6	5.0	11	4.0	18.2	40
0.8	6.4	14	5.0	22.7	50
1.0	8.2	18	6.0	25.0	55
1.2	10.0	22	7.0	27.3	60
1.5	10.9	24	8.0	36.4	80
2.0	14.5	32			

Multi-filament Lines



MICRO 4

Made from the thinnest UHMWPE yarn the Micro 4 is very sensitive and is suitable for Ultra-light applications. The structure of the new line is more consistent and is stronger than you would expect with other lines of similar diameters.

No.	Diam (mm)	Tensile Strength (KG)	Tensile Strength (lb)
0.2	0.074	2.48	5.5
0.3	0.091	3.6	8.0
0.4	0.105	4.8	11
0.5	0.117	5.4	12.0
0.6	0.128	6	13
0.8	0.148	8	18
1.0	0.165	9.7	21

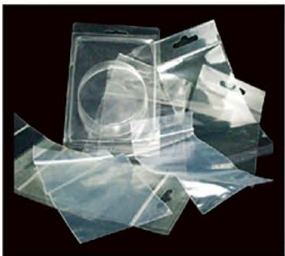
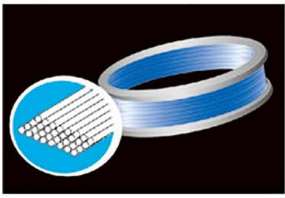


FUSION

It is a linear bundle of micro UHMWPE fibres that are thermally fused together eliminating friction caused by individual braids rubbing against each other in a braided construction. This high-performance line is thin in diameter with exceptional strength and toughness. Stretch free and superb sensitivity.

No.	Diam (mm)	Tensile Strength (KG)	Tensile Strength (lb)
0.2	0.074	2.0	4.4
0.3	0.091	2.9	6.3
0.4	0.105	3.5	7.7
0.5	0.117	4.4	10
0.6	0.128	5.1	11
0.8	0.148	6.6	15
1.0	0.165	8.0	18
1.2	0.181	9.6	21
1.5	0.202	11	25

Turn-Key Solutions



Pelican Tackle is one of the few line manufacturers worldwide that can provide all your line requirements from nylon monos, tapered lines, braids and flylines. Our speciality is producing products to suit your market and we can only do this with your input.

As well as having an extensive range of monofilament products in our range we also recognise that equally important is the packaging and presentation of the product. Here are some of the things we can offer.

Bulk packing – Mono can be supplied on spools (up to 2Kg), in hanks, or cut to length depending on your requirement. Above 2kg we can supply on drum reels.

Spool types – We currently have over 50 different spool types we can offer as standard and we can develop new spool types and sizes to meet your requirement upon request. Full details of available spools can be obtained from our sales staff.

Winding – We can offer parallel winding on certain spool types as well as connected spools and standard winding.


Spool Labels – From simple labels through 4 colour prints, metallic foils, holographic foils and embossed we are always keen to give you exactly what you want.

Display Packaging – Along with our differing spool types we can offer different display packaging including PVC and PET boxes, tin can, hanging spools, individual colour box and blister pack. As well as this we would be delighted to quote you for your packaging idea.

Leaflets and Labelling – Realising that a large part of your marketing message is delivered at the point of purchase we love working with clients to help get this message across whether it is by on-product labelling, leaflets and mini-books with the product or POS material supplied in the shipping carton.

In-house Design – We are happy to accept your artwork for any part of the product or we can work with you to amend existing artwork or develop new artwork on your behalf using our in-house graphic design facility.

PELICAN TACKLE



Our commercial fishing line series features a line with exceptional clarity to improve catch rates, coupled with great resilience and high strength for a long life. They are specially suitable for Squid, Cuttlefish, Tuna, Swordfish and Patagonian Tooth Fish.

Typically in diameters from 1mm through to 4mm we can supply either cut lengths, hanks 100m coils, 100kg coils, 300kg coils or to your requirements.

Commercial Fishing Lines

Long Line



Our commercial fishing lines are design for high performance to withstand the harshest situations.

The high strength, suppleness and transparency make it suitable as a main line as well as snoods.

Lines are available in hanks, bulk spools and wooden reels.



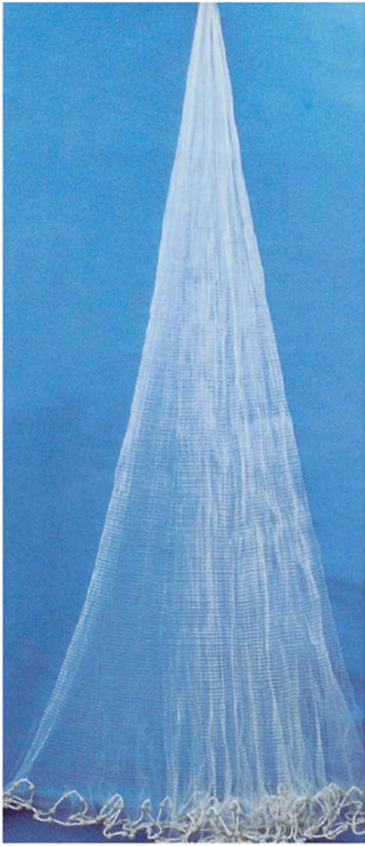
SNOODS

Tied hooks for longline

We supply ready-to-use tied hooks. Our tough commercial fishing hooks are matched with good quality lines and strong knots.

Longlines are customized to your requirements. A selection of monofilament and multifilament lines, twines and wires, a longstanding relationship with reputable suppliers of swivels and accessories and our tying operations are ready to handle and replicate any requirement.

Cast Net



Our cast nets are world renowned for their performance, reliability and value. Their unique patented design allows them to open fully and "lie flat" giving 50% more bait coverage than conventional designs.

Made from premium double knotted monofilament netting for durability they are available with either lead or non-lead sinkers in a variety of shapes depending upon your requirements. We can offer the following mesh sizes as standard

Sardine $\frac{1}{4}$ "

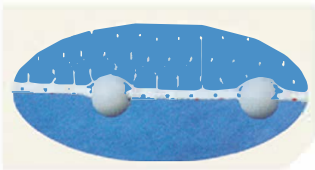
Bait fish $\frac{3}{8}$ "

Balyhoo $\frac{1}{2}$ "

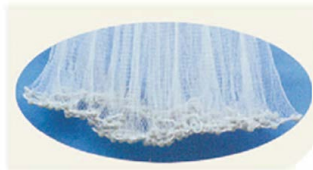
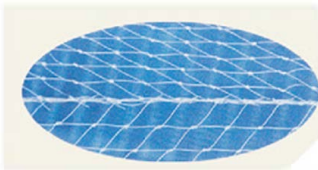
Shrimp $\frac{5}{8}$ "

Menhaden $\frac{3}{4}$ "

Mullet 1"



采用直拼缝制, 展开效果好、抛撒展开面积大, 展开形状优美
Unique net design, spread flat when thrown.
Maximun bait coverage area. Catch more baits!



采用覆塑铁坠, 利于环保

Protect the environment using lead-free sinker weights

Chum Bags

Our chum bags are specially designed for the different fish chum block in different species and size. Our bags are super strong and durable even under harsh climatic an UV conditions.

The flexible design permits variations in mesh size and bag size, to fit any chum block.

With a knotless mesh construction, it is convenient for cleaning and maintenance. It is also easy to use as it is designed with a drawstring closure. It can be supplied with clamped looped ends for an even easier use.

Standard mesh size: $\frac{1}{4}$ " , $\frac{3}{8}$ " $\frac{1}{2}$ "

Bag sizes: Customizable

Color: Blue netting with black drawstring

